

Ex 75



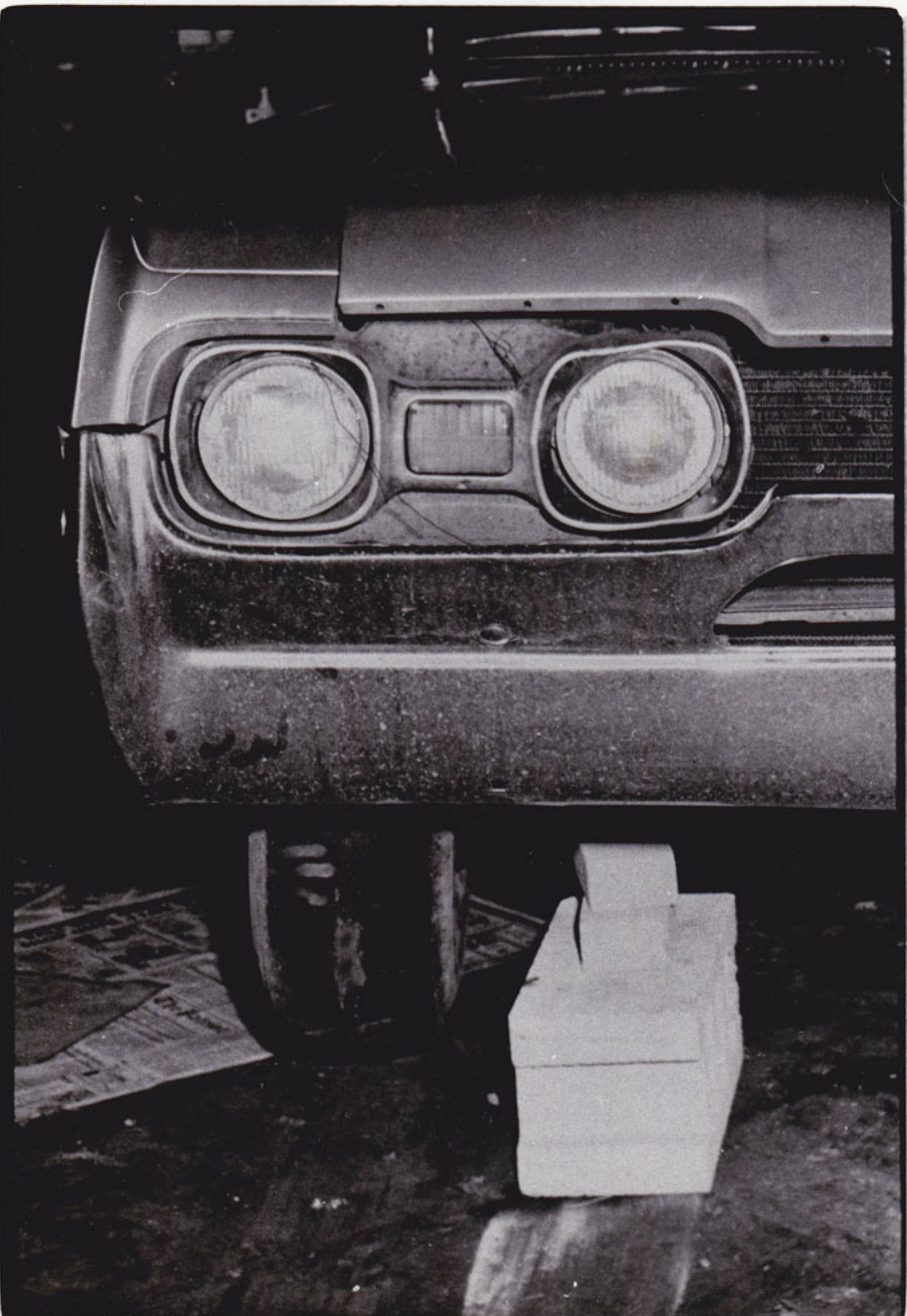
Ex 23



Ex 26



Ex 73 - Detail



MEASURED by P.T. Carpenter - Sheriff E. Pauling  
AT COUNTY COURT HOUSE

EX 21



CAST  
#94  
IS SHOWN  
ON LEFT  
SIDE OF  
PHOTO  
CAST  
of  
RIGHT  
REAR  
TIRE  
IN  
TRANSCRIPTS  
MEASURES  
26 X 10

CAST -  
#92  
IS SHOWN  
ON RIGHT  
SIDE OF  
PHOTO.  
CAST of  
RIGHT FRONT  
TIRE IN  
TRANSCRIPTS  
MEASURES  
26 X 11

BORO  
HALL  
PHOTOS  
"MOLD"

Testified AS TO be on opposite sides of house!  
There is NO MORE THAN 23" APART!  
Wheel BASE of CAR WAS 65"

Ex 24



N.L.442

"A TIRE PRINT"

Ex. 9/10

9

ONLY STANDARD PRINTS



If this  
 mud  
 contains  
 cast #94  
 #92 shows  
 "freshly poured"  
 in exhibit  
 or photo #1,  
 —  
 where is  
 the mud  
 in between  
 them?  
 Photo #94  
 shows  
 a solid  
 block of  
 mud!

Bone Hall "Mold" Photos

mud print contains casts #94-92  
 (convicting) (convicting)

"Another TIRE TRACK" JUL 442 "opposite of ROAD" Ex 10/9 10

ONLY MUD TIRE PRINTS



PHOTOS  
SHOW  
THIS  
IS  
SMALLEST  
MUD  
PRINT

YET  
IT  
CONTAINED  
LARGEST  
CAST

Bono Hall Photos  
"mold"

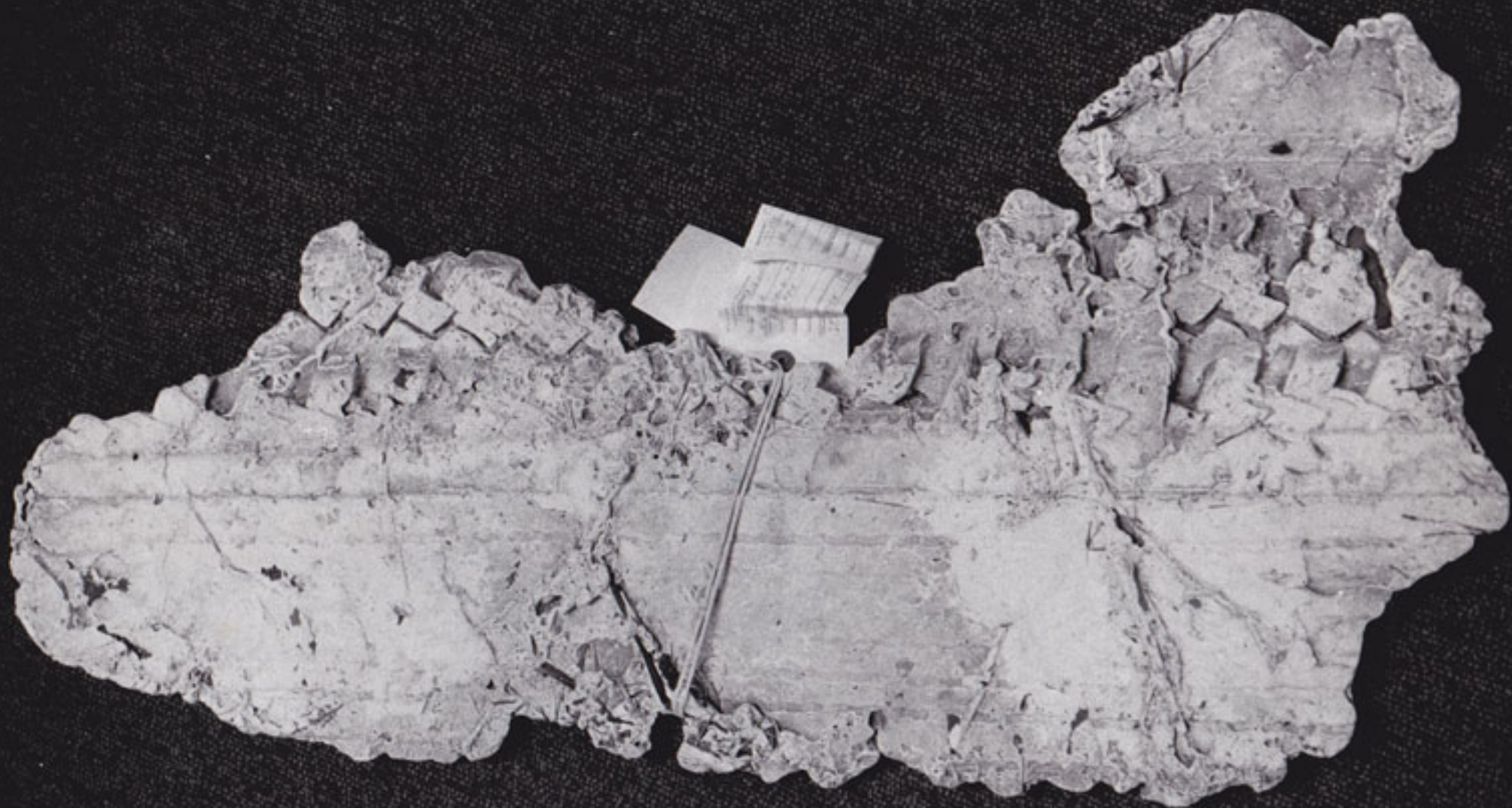
mud print contains cast # 91 (convicting cast)  
mud print contains cast # 93 (Now convicting cast)



TRY AND PUT THIS CAST #91 (CONCRETION CAST)  
IN MUD PRINT #10

LEFT REMNANT

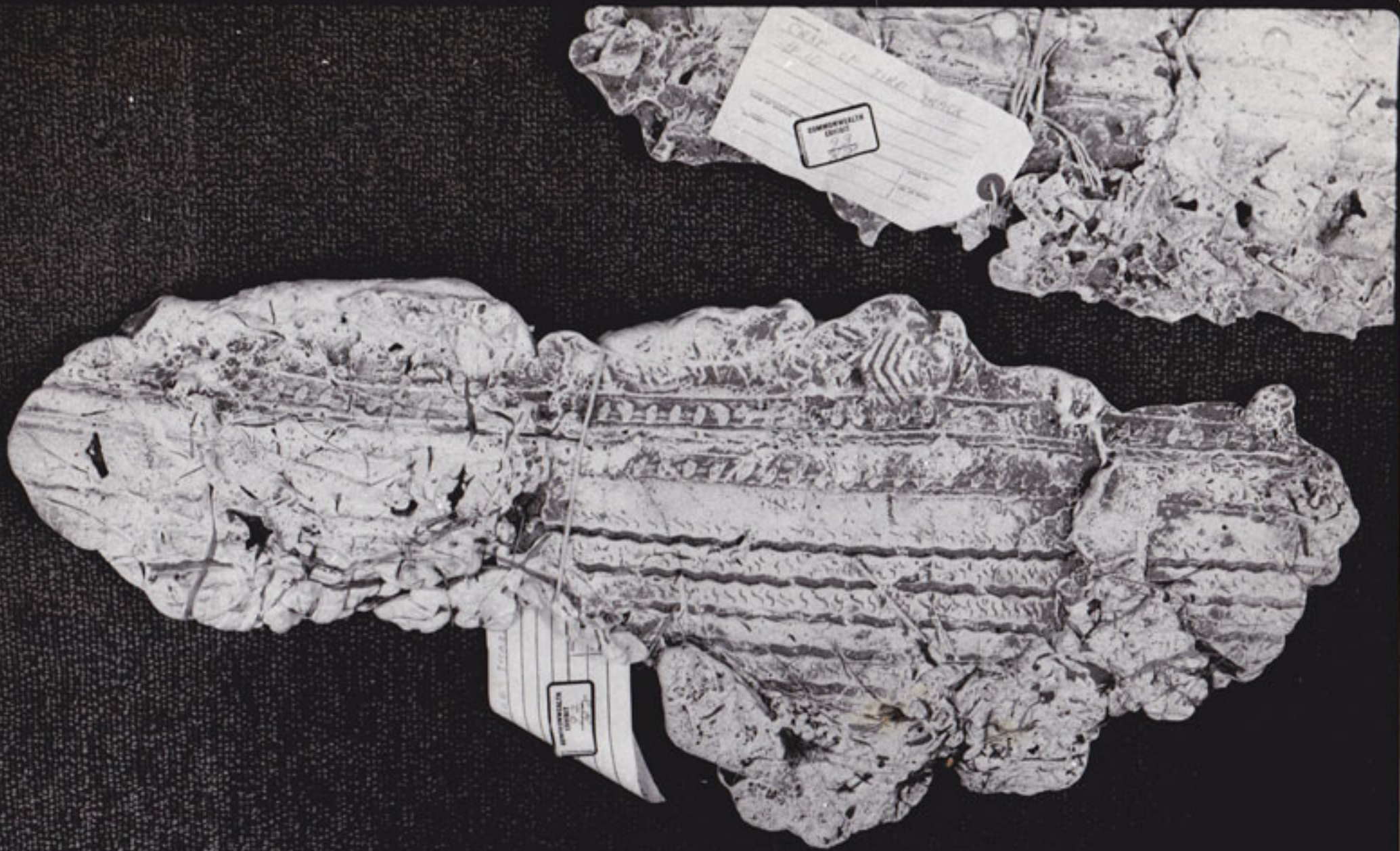
EX. 91  
EX 91



MEASURED  $33\frac{1}{2} \times 16$

Right Front  
(No Corviding)

Ex 92

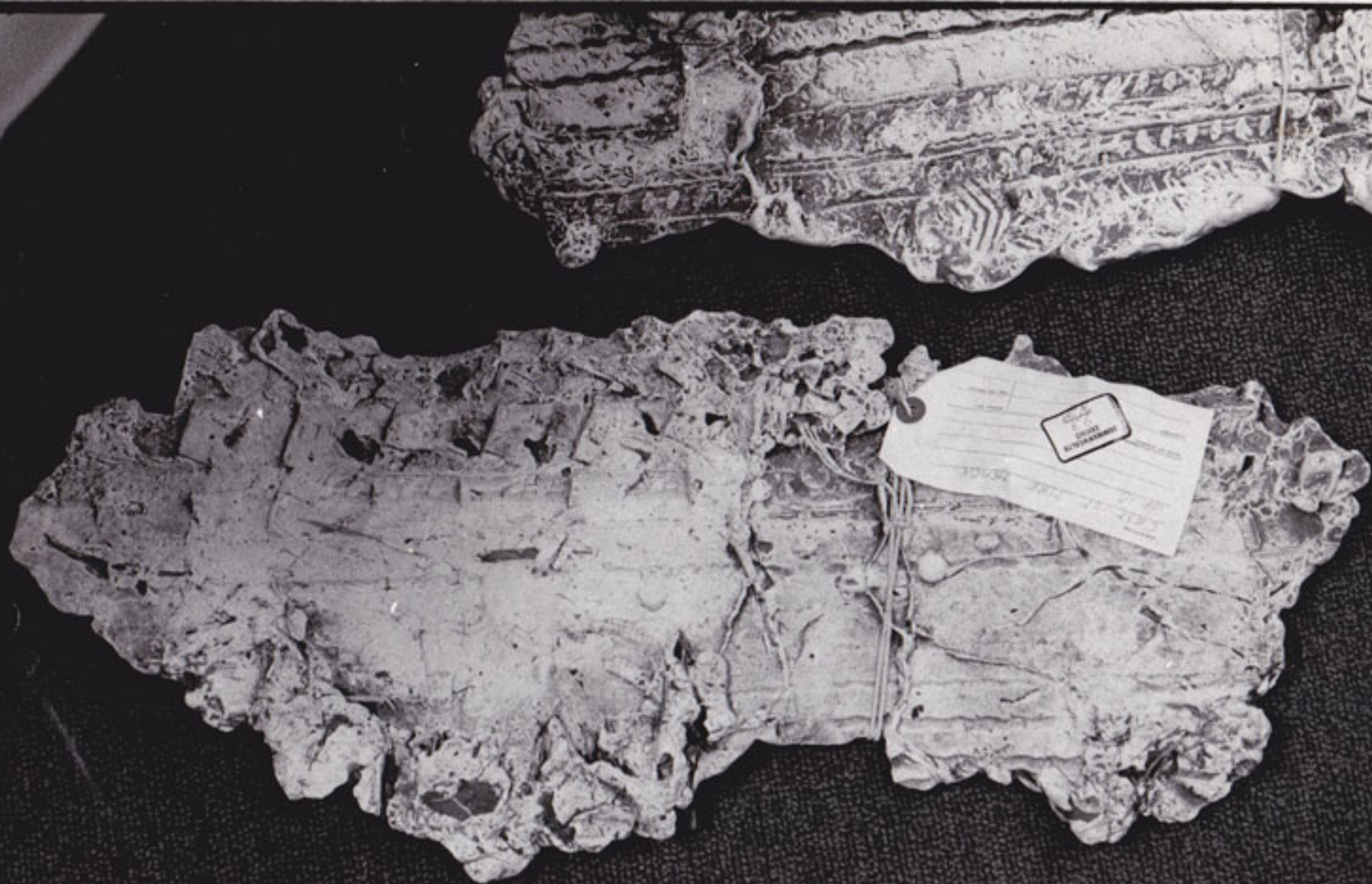


Deep Trends → NEW TIRE bought on 19<sup>th</sup> of Oct  
from POOLE'S

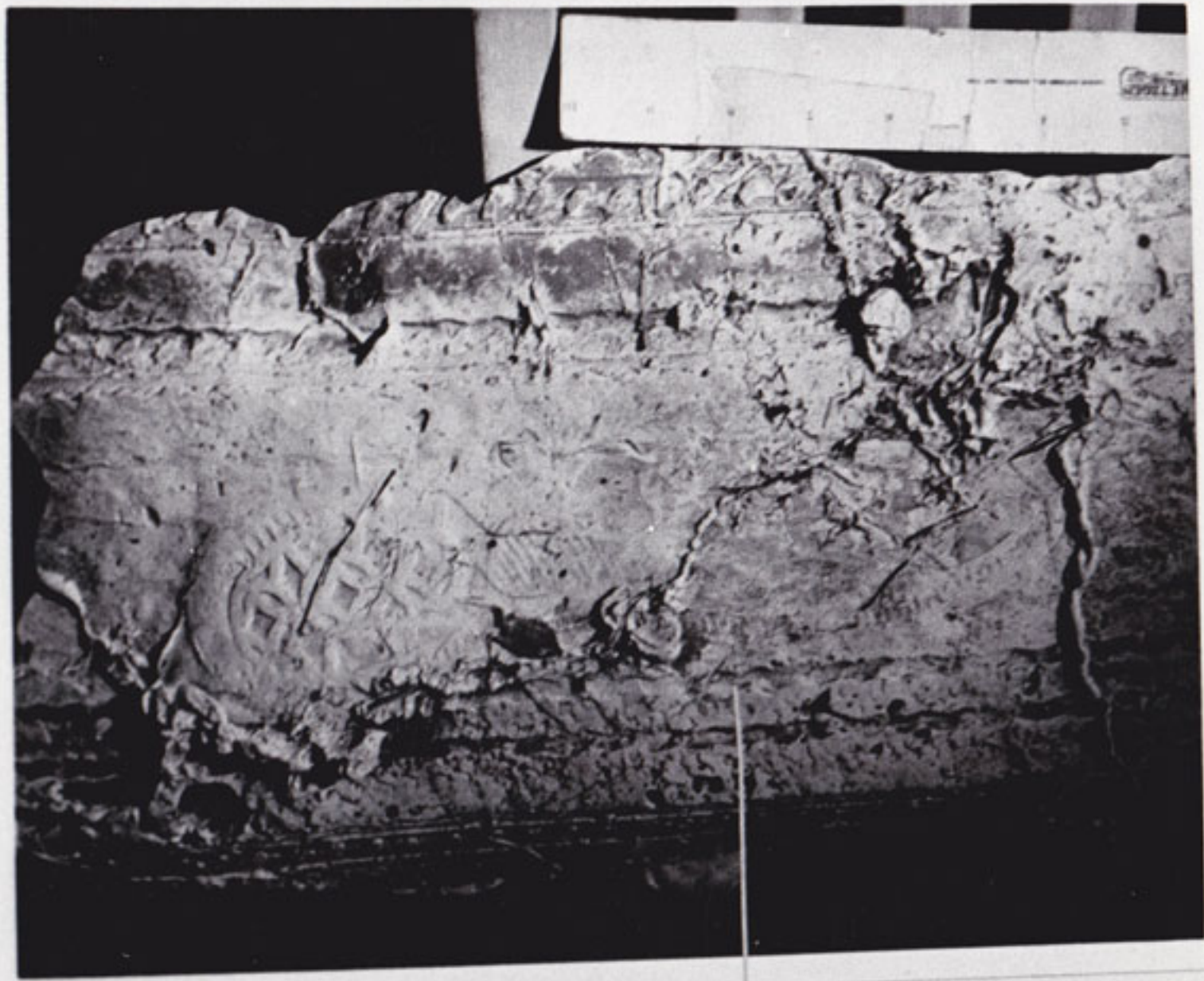
TRY AND PUT THIS CAST #93  
IN MUD PRINT #10.

LEFT FRONT.  
(NOW CORRECTED)

EX 93

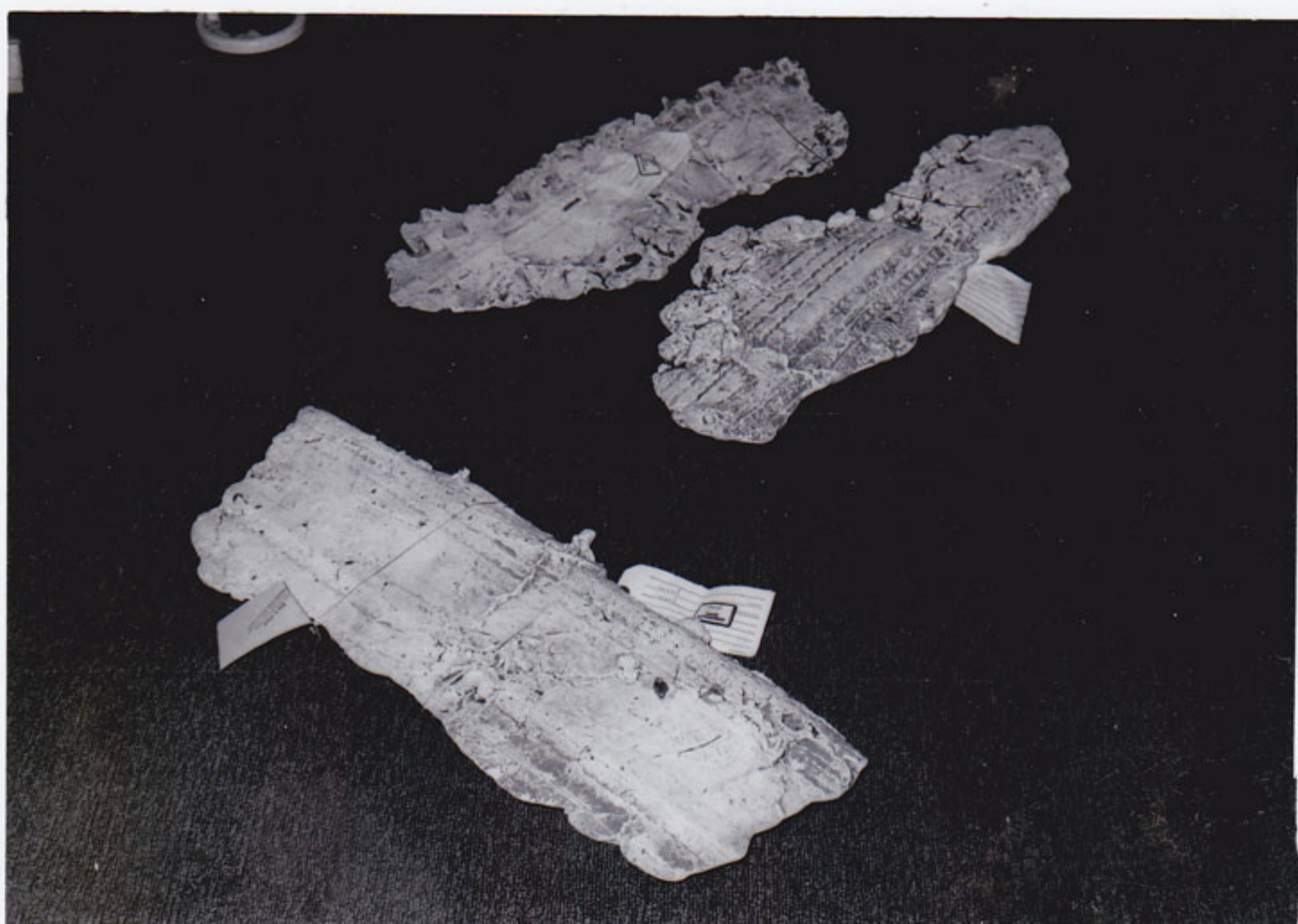
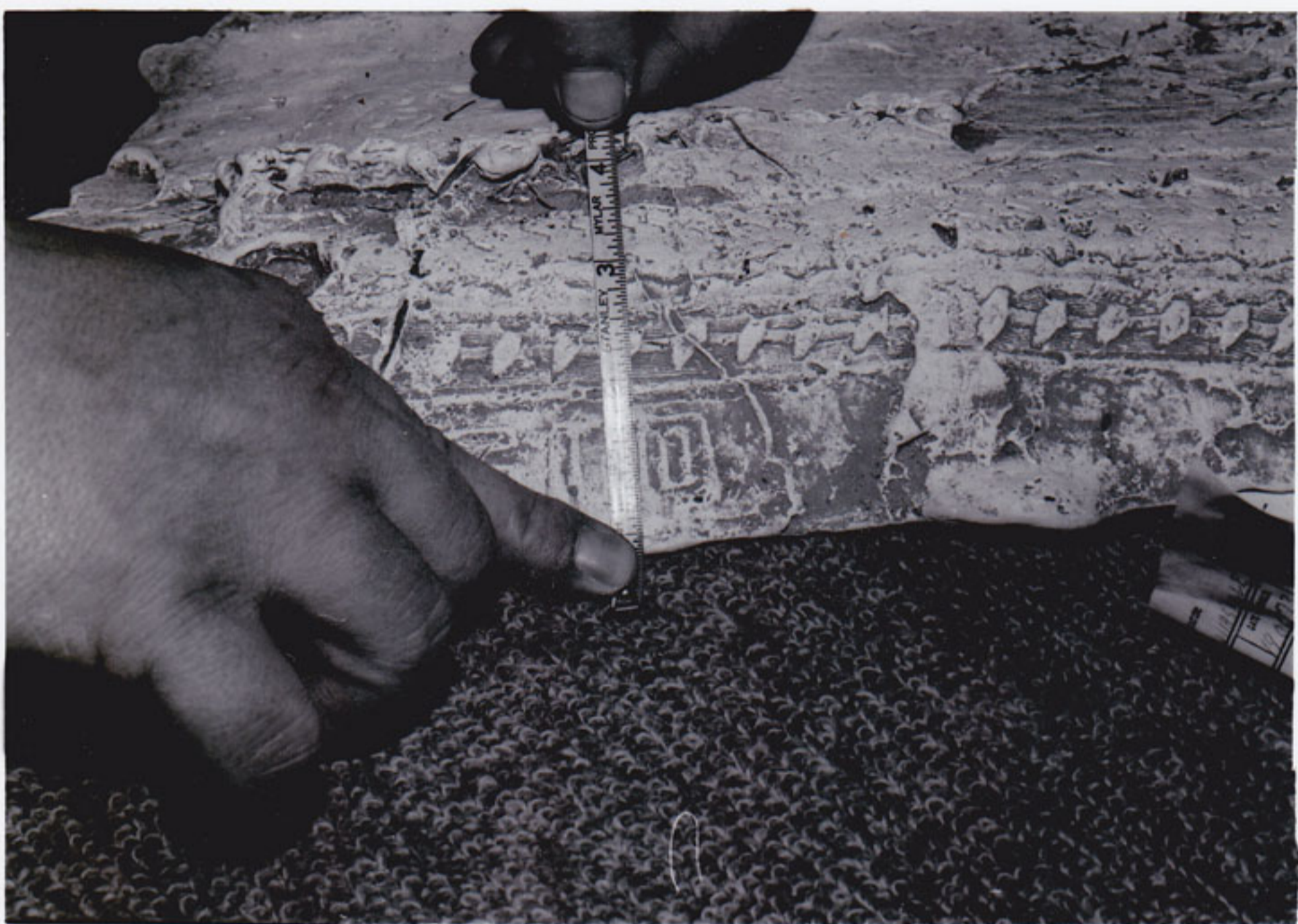


L-1



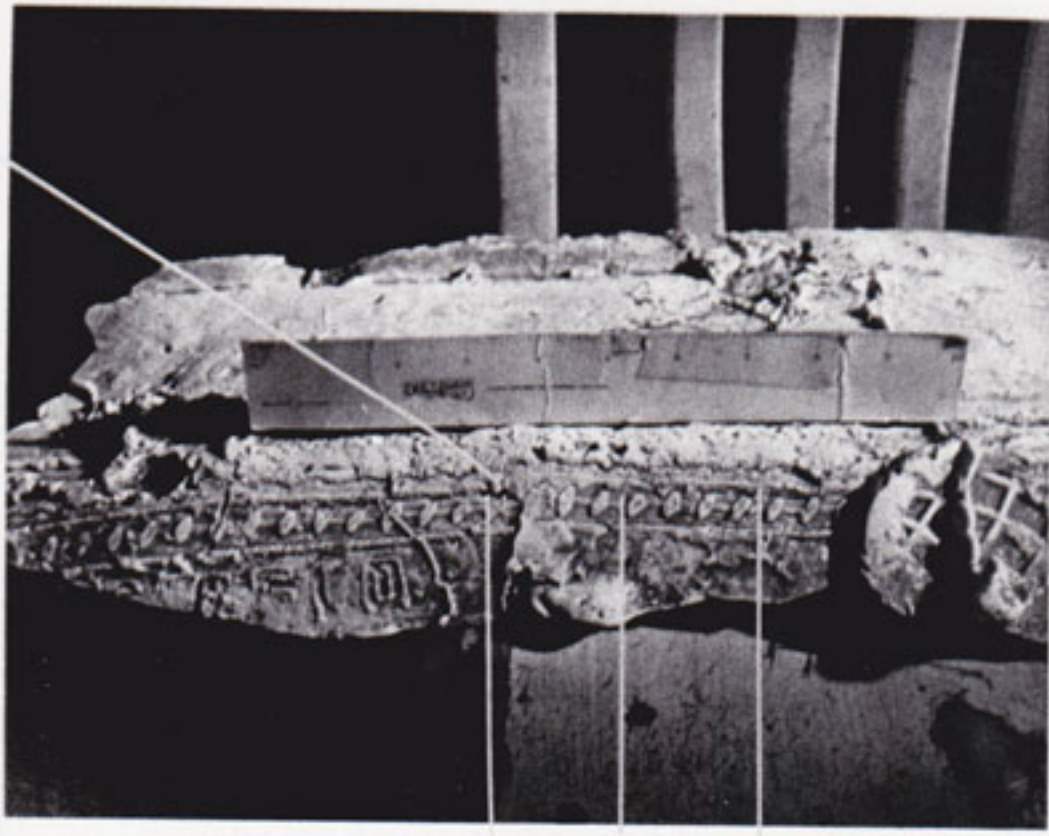
Tire print - SW AREA PRINTS

5



H3-EL-3

L-1



UNIVERSITY OF MICHIGAN  
MUSEUM OF ART AND ARCHITECTURE

LEK-3



2 3 4